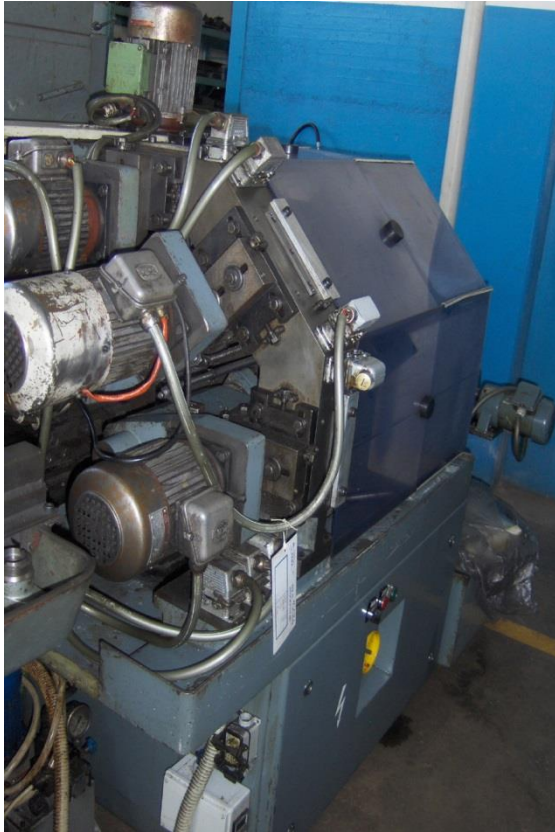


TRAUB TE



TECHNICAL DATA

BASE MACHINE Ø OF THE DRUM / Ø ON THE CHAIN LOCK W. SIDES / STAT. / MAX. UNITS CYCLE PRODUCTION	340 / 215 mm. 3 / 8 / 8 no. from 0,92 to 11,7 sec. from 5,1 to 65 parts./min.
COIL FED MAX. WEIGHT OF THE COIL DIMENSION	175 or 350 kg. Ø 1000 mm.
WIRE FEED MECH. (Ø 8) / HYDR. (Ø 12,7)	50 mm. / 100 mm.
PRE-TURNING UNIT : MAX. TURNING Ø TOOLS SECTION PLUNGE TRAVEL ROTATION SPEED	12,7 mm. 8 x 8 mm. 5 mm. 670 tp 2050 r.p.m.
PRE-THREADING UNIT MAX. THREADING	12 MA
SAWING UNIT Ø OF THE SAW / MOTOR	160 mm. / 1,1 kw.
TAPPING HEAD SPINDLE SPEED CAPACITY / LENGTH	505 to 3180 r.p.m. M10 / 50 mm.
BACK WORKING HEADS MAX. LENGTH DRILLING (steel) TAPPING	30 mm. Ø 6 mm. M8
MILLING HEADS MAX. Ø WITH DISC / STEM MILLING TRAVEL	125 / 10 mm. 50 mm.

DESCRIPTION

Second-hand machine
Category: Coil fed lathe
Serial number: 217

ACCESSORIES

Coil fed
Straightner
Table with 8 stations
Sawing unit
No. 3 frontal units + 1 back unit
Hydraulic box + coolant tank
Chips conveyer